

N.E. 1/4 OF
SECTION 33, T.7N., R.1W., S.L.B. & M.

IN NORTH OGDEN CITY & WEBER COUNTY

PREFIX: 17-073

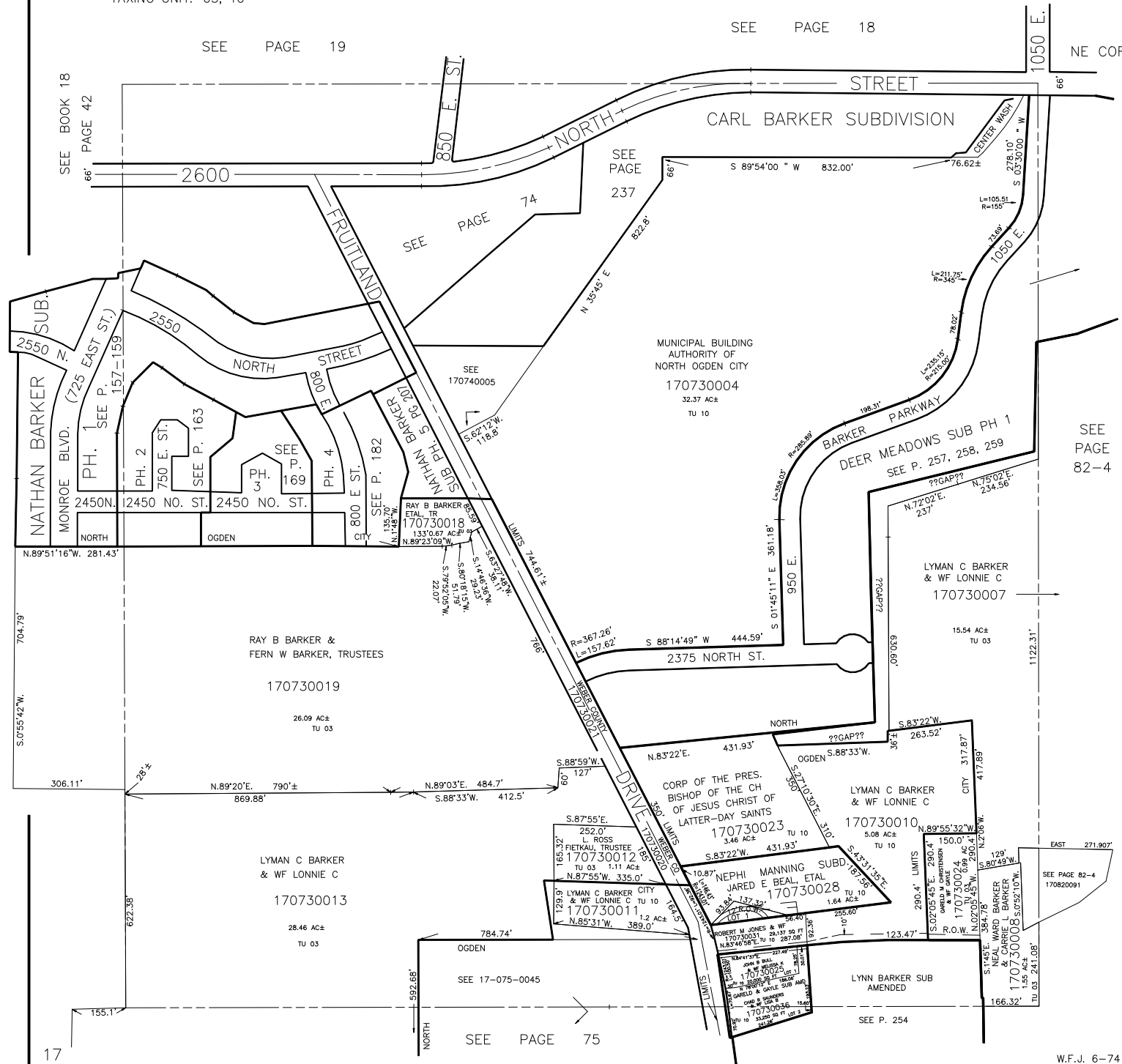
TAXING UNIT: 03, 10

SCALE 1" = 200'

SEE PAGE 18

SEE PAGE 19

NE COR SEC 33



SEE BOOK 18
PAGE 42

66'

2600

850 E. ST.

NORTH STREET

CARL BARKER SUBDIVISION

SEE PAGE 237

S 89°54'00" W 832.00'

66'

1050 E.

66'

SEE PAGE 74

FRUITLAND STREET

2550

NORTH STREET

MUNICIPAL BUILDING
AUTHORITY OF
NORTH OGDEN CITY

170730004
32.37 AC±
TU 10

NATHAN BARKER SUB.

MONROE BLVD. (725 EAST ST.)
PH. 1
SEE P. 159

PH. 2
750 E. ST.
SEE P. 163

PH. 3
2450 NO. ST.
SEE P. 169

PH. 4
2450 NO. ST.
SEE P. 182

800 E. ST.

NATHAN BARKER SUB PH. 5 PG 201

RAY B BARKER ETAL TR
170730018
133°0.67 AC±
N.89°23'02"W
135°70'
N.148°W

170740005

SEE PAGE 182

170730001

170730001

170730001

170730001

170730001

170730001

170730001

170730001

170730001

170730001

170730001

170730001

170730001

170730001

170730001

170730001

170730001

170730001

170730001

170730001

N.89°51'16"W. 281.43'

704.79'

S.0°55'42"W.

RAY B BARKER &
FERN W BARKER, TRUSTEES

170730019

26.09 AC±
TU 03

306.11'

N.89°20'E. 790±

869.88'

N.89°03'E. 484.7'

S.88°33'W. 412.5'

S.88°59'W. 60.127'

N.83°22'E. 431.93'

OGDEN S.88°33'W. 36±

LYMAN C BARKER & WF LONNIE C

170730023

5.08 AC±
TU 10

LYMAN C BARKER & WF LONNIE C

170730010

150.0'

N.89°55'32"W

150.0'

S.80°49'W

417.89'

317.87'

129'

170730008

170730008

170730008

170730008

170730008

170730008

170730008

170730008

170730008

170730008

170730008

170730008

170730008